

HARBOR AREA MODEL 'A' CLUB

Dedicated to preserving and driving the 1928-1931 Model 'A' Ford since 1957
Torrance, California

MARCH 2026



Harbor Club cars at annual banquet

HARBOR LIGHT

Technical Activities

Saturday mornings.
We meet from about 9:30AM to noon to work on Model A projects. Bring your Model A by and we'll work on it.
Al's Garage,
907 Van Ness, Torrance CA (in the alley)



Next Club Meetings:

The next club meeting will be
Friday, March 27th
At 7:30PM
At the Walteria Clubhouse

Next Board Meeting

March 7th
At "Al's garage"
9:30 AM



inside

- 2 Dennis' Words — Second gear grind
- 2 Editor's corner — Al's Garage
- 3 Harbor happenings in March
- 4 Pancake breakfast in April info
- 5 Rumble seat top and car for sale
- 6 Tech talk fire prevention
- 7 1930 cost or living and Relay for life form
- 8 Tool list (See Bobby DeCrescenzo)

- 9 Official conversion chart
- 10 Era clothes for men 1930
- 11 Our advertising friends
- 12 Officer List & Mailing Info





*A Note from the
Harbor President
Dennis Simpson*



The Second Gear Grind

As we begin 2026, I extend my sincere appreciation to all members that step up to serve as officers. Your commitment is essential to maintaining your club as a welcoming space for socializing, touring in the Model A and sharing expertise - particularly with new members. To ensure the future of our hobby, it is essential that we attract new members and share our collective knowledge.

I will attempt to keep all of our members well informed thru this column, e-BLASTS, and at meetings and I invite feedback from all of you too! Please try to attend our Monthly Business Meetings. I really do enjoy seeing y'all.

As we move deeper into 2026, Donniss Bates and the Activities Committee have planned something for everyone to enjoy in the coming months. Be sure to join us and register for these events.

Until next time, remember, while driving your Model A, you put Smilage on your face and everyone around you.

Enjoy the ride!

Dennis



*Editor's Corner
By Dick Wyckoff*

















So Cal weather has been generally nice lately compared to the rest of the country. I hope everyone is safe (and warm).

Our activity team has been busy planning tours and outings for the future. Some fun events are planned. For the mechanics, we still meet almost every Saturday morning at "Al's Garage" to work on whatever shows up. Sometimes it's minor things, and sometimes not. Always a learning experience. Looking forward to the many So Cal car shows. Lots of people are amazed that we still drive these almost 100 year old cars. That's what we do and love to share our experiences.

Keep driving those cars!

Dick

MARCH		HARBOR A HAPPENINGS 2026				
SUNDAY	MONDAY	TUESDAY	WEDNESDAY	THURSDAY	FRIDAY	SATURDAY
1	2 <i>DINNER 4:30</i> *Location TBD 	3	4	5	6	7 <i>MODEL A TECHNICAL SUPPORT</i> Al's Garage 9:30-12
8 Daylight Savings Time Starts 	9  <i>DINNER 4:30</i> *Location TBD	10	11	12  <i>ACTIVITY COMMITTEE MEETING</i> 1 pm	13	14 <i>BOARD MEETING</i> Al's Garage 9:30  <i>MODEL A TECHNICAL SUPPORT</i> Al's Garage 9:30-12
15	16 <i>DINNER 4:30</i> *Location TBD 	17  St. Patrick's Day	18	19	20 First Day of Spring 	21 <i>MODEL A TECHNICAL SUPPORT</i> Al's Garage 9:30-12
22	23  <i>DINNER 4:30</i> *Location TBD	24 	25 	26 	27	28 <i>SAFETY CHECK</i>  Gordinier's 10-3 Potluck
29  Palm Sunday	30	31				*Contact Jim Huizdos or Gloria Younkin for dinner location.

TOURS & ACTIVITIES ADDITIONAL INFORMATION

Solvang

Date: T/W/TH, March 24th – 26th

Location: King Frederik Inn, 1617 Copenhagen Drive, Solvang – (805) 688-5515

Promo Code: To make your reservation, reference Harbor Area Model A Club, for special pricing.

Activities: Many fun destinations to experience and enjoy.

Please confirm if you plan to join us, and Donnis will keep you updated with additional information – text or call. Donnis Bates (310) 713-5830

Safety Check & Business Meeting

Date: Saturday, March 28th

Location: Jack & Joan's home, 2017 W. 238th Street, Torrance

Time: 10am – 3pm

Potluck:

- A-L side dish or salad
- M-Z main dish

Bring your 'A' for a thorough check up!



April 12th – Orange County Pancake Breakfast
 April 24th – Business meeting
 May 1st – 3rd CCRG Jamboree, Bakersfield, CA

[Saturday Morning Coffee Gathering is Alive and Well!](#)

If you are looking for a little tire-kicking adventure on **Saturday** mornings between 7 and 9AM, check out the Caffeine Cruisers at the corner of Artesia Blvd. and Hawthorne, in Torrance, CA. Several of the Harbor Model A club members and other car enthusiasts of all car types meet to talk cars. There are some very nice autos and some nice people there, too!

The address is 17400 Hawthorne Blvd., Torrance CA. (at Artesia Blvd.)

Come on by and get your weekend started in true So. California style.



[2026 Membership, Roster and Club Merchandise Items](#)

Jim Huizdos has a selection of new **Club merchandise**. We have hats, shirts, patches, t-shirts and we still have 60th anniversary items for sale at a discount. More to come. The updated **2025 Harbor phonebooks/rosters** are available from Ursi free of charge through e-mail. Club members that don't attend events can request a phonebook/roster by mail. Contact **Ursi Schmidt** at 310-561-4895. Make sure Ursi has your latest info. **Just a note:** We regularly update the roster. If you have any address changes, phone number changes or email changes, let Ursi know. Let Dick Wyckoff know, too. He'll put the info in the *Harbor Light*.



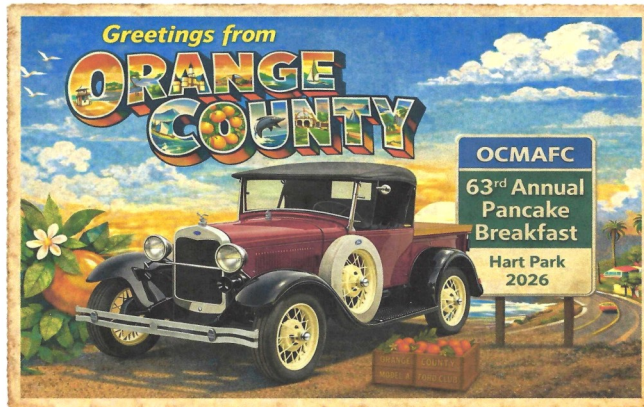
Orange County Model A Ford Club

Pancake Breakfast

Sunday, April 12, 2026

Hart Park, 701 S. Glassell St, Orange, California
7:30am-11am

We look forward to seeing you & your Model A's (& other classics)



Adults \$10
Children \$5 (Ages 2-10)

Pancakes, Sausage, Eggs
Juice, Hot Cocoa & Hot Coffee

Large Raffle Selection



ocmafc.com

For more info contact:
Aaron Magdaleno
714-862-5773

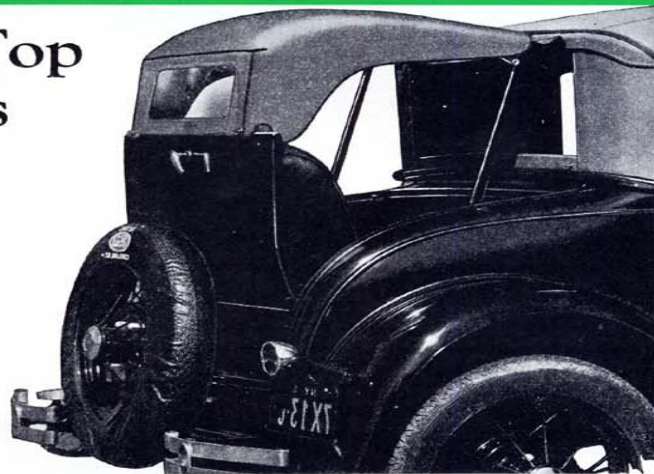
GILDING THE LILY . . . accessories for sale when Model A was NEW



PAT. PEND.
TUXAWAY
COPY. 1930

For Ford Cars

**A Rumble Seat Top
That Harmonizes
With the Car!**



Out of Sight When Not in Use

*Up or Down in Half a Minute
Without Leaving the Seat . . .*



Easy Entrance or Exit

Here is the first built-in top for the rumble seat designed by factory top engineers. Tuxaway adequately protects the passenger without giving the makeshift tent or awning effect.

For Sale

1931 Model A Coupe with rumble seat. It's black with red wheels! Been garaged for 10 years. Hasn't been run in ten years, but engine does turn over! Body is in great shape, paint and interior are in very good condition, has an electric wiper. With a little work it would be a great car!! Asking \$ 13K. Price is negotiable!
Call Eddie 310 487 2275



Technical Talk

This article was recently posted on Fordbarn.com by Bob Bidonde. It contains much useful information applicable to our Model A hobby. We always stress safety in the club. This addresses fire safety. Thanks, Bob. . . .

Bob Bidonde

Senior Member



Join Date: May 2010
Location: Long Island, NY
Posts: 836

Re: Model A FIRE safety suggestions

Causes of fires & protections:

Defective Terminal Box. In the past, there was a reproduction terminal box that had the terminals protrude from the back of the box. Once installed, the terminals had the potential to ground on the firewall. Some of these terminal boxes may still be in Model A's today;

Deteriorated Wire Insulation. The insulation on original / old electrical harnesses and cables deteriorates leading to short circuits;

Garage Heaters & Appliances. Model As parked in garages have a habit of dripping gasoline from the carburetor. Moreover the cowl tank is vented to the atmosphere. Any flame source in a non-ventilated garage such as a household appliance pilot flame / electrical gas igniter on a water heater / furnace, electric heater element, kerosene / propane heater flames have caused cars and homes to burn;

Ammeter. Using a 20A ammeter with an alternator may cause the ammeter to overheat and burn. Use a 30A ammeter with an alternator;

Wire Chaffing. See Figure 916 on Page 462 which depicts a potential short circuit condition for the instrument panel light.

See Page 462, Figure 921 which depicts a potential short of the ignition cable terminal on the popout switch.

Yet another wire chafing condition is depicted in Figure 929 On Page 465. In this case, the headlight wire can chafe on a radiator support.

Refer to Page 468 of the Ford Service Bulletins. There are 2 brackets that mount on the interior side of the firewall which hold wires for the cowl lights and the dome light. Wires will eventually chafe at these brackets, so install round rubber grommets in the brackets.

Fuses. A single fuse in the classic location at the starter switch is effective when the engine is not running. However, it is safer to have a fuse in the primary hot lead to all of the electrical devices on the vehicle. Not only will this protect for short circuits when the engine is running, separate fuses facilitate locating a problem device / wire.

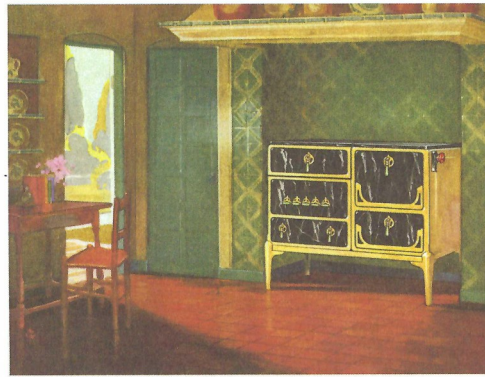
Battery Cutoff Switch. A great way to disconnect the battery when the vehicle is parked;

Gas Lines. Gas lines with sections of rubber hoses and an add-on filter add leak points in the vicinity of the exhaust manifold;

Loose Battery has a propensity for a short of the hot battery terminal against its hold-down bracket;

Electrical Tape. No matter the quality of the tape, it should be understood that the use of electrical tape as wire insulation is temporary because its adhesive will not standup to the operating environment of a vehicle. Always replace frayed / damaged wires;

Fire Extinguisher. Must be rated for use on gasoline and electrical fires.



See MAGIC CHEF First . . .



IF you see this knob available in your community, it is the new Magic Chef burner knob for use in our New Model Gas Range.

NO MATTER the gas range that is a LOCKER.

Magic Chef
AMERICAN STOVE COMPANY

WHEN you go to buy a new cook stove see "Magic Chef" first! It would be distinctly unfair to yourself to attempt to judge other types of cooling appliances WITHOUT FIRST seeing the unmatched beauty of "Magic Chef" and acquainting yourself with its many labor-saving advantages.

No matter whether your kitchen is large or small, old-fashioned or modern, "Magic Chef" will give it a new atmosphere of charm and comfort. Add to this beauty "Magic Chef" possesses even more labor-saving advantages including of course, the famous Red Wheel Oven Regulator and an insulated oven. Specially designed for perfect baking, even in its broiling compartment of unusual efficiency. The cooling-top, too, is large and roomy and can be

manually concealed by a spring-balanced cover-all. "Magic Chef" has the approval of noted artists, architects, expert gas engineers and home economics authorities. It is, indeed, the new standard for comparison, and represents most unusual value.

Whether gas is available you will find a dealer or gas company who will gladly explain the many good features of "Magic Chef" and give a special demonstration if you wish. For these very good reasons you are urged to see "Magic Chef" FIRST, if you don't, you may seriously regret your ultimate purchase of a gas range.

A dealer, "The Home Range in Gas Ranges," nearest to you will gladly explain the many good features of "Magic Chef" and give a special demonstration if you wish. Ask your dealer for a free copy or write to the address given below.

Largest Makers of Gas Ranges in the World

AMERICAN STOVE COMPANY - DEPT. 8-206 CHOUTEAU AVENUE, ST. LOUIS, MO.

SeekPublishing

Remember When

1930

1930 COST OF LIVING

LIVING

New House	\$7,146.00
Average Income	\$1,973.00 per year
New Car	\$610.00
Average Rent	\$15.00 per month
Tuition to Harvard University	\$400.00 per year
Movie Ticket	25¢ each
Gasoline	10¢ per gallon
United States Postage Stamp	2¢ each

FOOD

Granulated Sugar	65¢ for 10 pounds
Vitamin D Milk	56¢ per gallon
Ground Coffee	46¢ per pound
Bacon	25¢ per pound
Eggs	15¢ per dozen
Fresh Ground Hamburger	13¢ per pound
Fresh Baked Bread	9¢ per loaf

SeekPublishing

Remember When

1930

5th Relay For Life of Torrance Car Show

Sunday / July 12, 2026 / 9 AM - 3PM

Redondo Beach Performing Art Center
1935 Manhattan Beach Blvd. Redondo Beach 90278

Proceeds help further the American Cancer Society's mission to End Cancer as we know it, for Everyone.

Registration fee includes t-shirt and dash plaque.

\$45 - Car Entry before/by June 28th / \$50 after an until day of event.

Day of event based on available space. Limited to 225 car entries.

Gates open at 7 AM - Cars parked by 9 AM

Join us for a day of Cars, Trophies, Raffles, Music and Fun. Open to all Cars, Trucks, Motorcycles and Special Interest Vehicles.

No Alcoholic Beverages

Cut Here

Car Entry information by June 28th and receive 5 free raffle tickets. ____ \$45 - Pre-Registered by June 28th
(Checks make payable to American Cancer Society)

Entry Paperwork Is Required. Please mail car entry and checks to the address below.

Name _____ Phone _____ Email _____
Address _____ City _____ Zip _____
Year _____ Make _____ Model _____
T-Shirt Size S ____ M ____ L ____ XL ____ 2XL ____ 3XL ____ Additional shirt \$20

Liability Release: In consideration of the inclusion as a participant of the RFL of Torrance Car Show, I agree to indemnify and hold harmless the RFL of Torrance Car Show, City of Redondo Beach, the Redondo Beach Performing Arts Center, the American Cancer Society, Relay For Life Torrance. All sponsors, vendors, employees and independent contractors of said entities. Participant(s) acknowledges he/she/they have liability insurance as required by the State of California Department of Motor Vehicles CVC 16020 Sections a.b.

Participant Signature _____ Date _____



Send Entry and Checks(ACS) to Annette Porter - 19310 Ronald Ave. Torrance, Ca. 90503
Email questions and concerns to Annette Porter - ampdynom@aol.com - (310) 245-4502
©2023 Tax deduction EIN 15-1768493

Technical



The Harbor Club has a nice assortment of Model A tools for loan to members. When you borrow them, we ask that you return them in good condition. If you have a need for a special tool we don't have, contact Bobby DeCrescenzo and maybe we can obtain one for future use by members.

Tool List

#1 Some of the car parts: Distributor, water pump, clutch disk and aligning tool, two different carburetors

#2 Gas Gauge Tool Used for removal and installation of the Model A gas gauge

#3 Clutch Disk and clutch disk tool used for aligning the clutch disk when removal or installation of the transmission, pressure plate or clutch disk is needed.

#4 Frame Spreader Needed to spread the frame of the chassis for easier installation of the Model A engine.

#5 Rear Spring Spreader Needed to safely remove or install the rear leaf spring from the rear end housing.

#6 Brake Pedal Adjusting Tool Used for adjusting the correct travel of the Model A brake pedal as relating to the force of the brakes when contacting the brake drums.

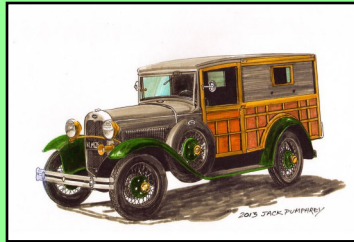
#7 Steering Wheel Puller Needed to remove the steering wheel from the steering column. There are two --- one is for the 1928/1929 the other is for 1930/1931

#8 Rear Wheel Drum Hub Puller Needed for the removal of the rear drum hub for maintenance on the brake system



March Birthdays

8 Richard Parrish
12 Margaret Gott
25 Jack Goldberg
28 Jim Perreten



March Anniversaries

7 Tim & Pat Harrison

OFFICIAL CONVERSION CHART

HOW TO INTERPRET

ANTIQUUE CAR ADS

IF IT SAYS:

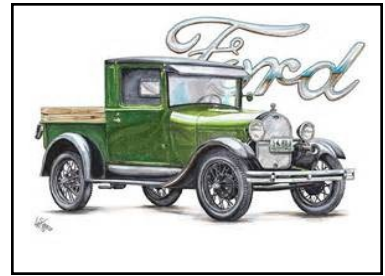
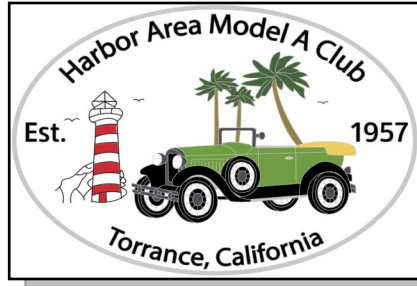
IT REALLY MEANS:

Rare model.....	Nobody liked them when new either
Older restoration.....	Can't tell it's been restored
Needs engine work.....	It's been frozen for 30 years
Uses no oil.....	Just throws it out
No rust.....	Body and fenders missing
Rough.....	It's too bad to lie about
One owner.....	Never been able to sell
No time to complete.....	Can't find parts anywhere
Needs interior.....	Seats are gone
Rebuilt engine.....	Has new spark plugs
May run.....	But it never has
Low mileage.....	Third time around
Many new parts.....	Keeps breaking down
29 coats hand-rubbed paint....	Needed that much to cover rust
Clean.....	It sat out in the rain yesterday
Best offer.....	About what I expect to get
Always driven slowly.....	Won't go any faster
Prize winner.....	Hard luck trophy 3 times in a row
Stored 25 years.....	Under a tree
Real show stopper.....	Orange with purple fenders
Easy restoration.....	Parts will come off in your hand
Ready to show.....	Just washed it
Top good.....	Only leaks when it rains
Good investment.....	Can't depreciate any more

Era Men's clothes 1930




The *Harbor Light* is a monthly publication for the Harbor Area MARC/MAFCA. All articles or want ads must be received by the 15th of each month in order to appear in the following month's publication. Neither the *Harbor Light* and its staff, nor the Harbor Region of the Model A Restorer's Club Inc. and Model A Ford Club of America, Inc. will assume any liability for errors or omissions, or for any liability or resultant damages for products, opinions or services listed herein. Some information contained in our newsletter has been reprinted from other newsletters; we thank and acknowledge them. Editor




Amanda Shelden
 REALTOR®
 DRE#02250556
 424-506-9007
 WEST SHORES REALTY
 29050 S. Western Avenue,
 Rancho Palos Verdes, CA 90275
 SheldenHomes@gmail.com

Proud printer of the 'Harbor Light'
STUDIO
 PRINTING 
Edward Su
 ed@studioprinting.net
 www.studioprinting.net
 PHONE: 310-333-8989
 FAX: 310-333-8986
 CELL: 310-292-3219

EARLY FORD STORE
 of California
 www.earlyfordstore.com
 Specializing in Rare Parts
 and Accessories for
 Early Fords 1928/1972
 Passenger Car & Pick-Up
Bill McGrath
 San Dimas, CA 91773
 108 W. Bonita Ave.
 Tel: (909) 305-1955
 Fax: (909) 305-1953


Mike's "A" Ford-able Parts
Mike Butcher
 124 Model A Drive, Maysville, GA 30558
 email: mike@mikes-afordable.com - www.mikes-afordable.com
 Fax: 706 652 2492 - Phone: 706 652 3866
 1 888 TRY MIKE (879 6453)

 Specialising in 1928 - 1931 Model A Ford Parts

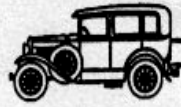
M B RENTALS
 Studio Equipment
 Lights and Fixtures

Drain Marshall
 Home: (310) 378-5061
 Cell: (310) 570-5938

BRATTONS ANTIQUE AUTO PARTS

 1606 BACK ACRE CIRCLE
 MOUNT AIRY, MD 21771
 Order # **800 255-1929**
 Web: **brattons.com**
 FREE 194 page illustrated MODEL A parts catalog
 Catalog contains 3,200 Model A parts with full
 descriptions and Picture of each part.
 Supplying Quality by using over 90% U.S. parts
 Serving the Model A restorer with parts since 1977

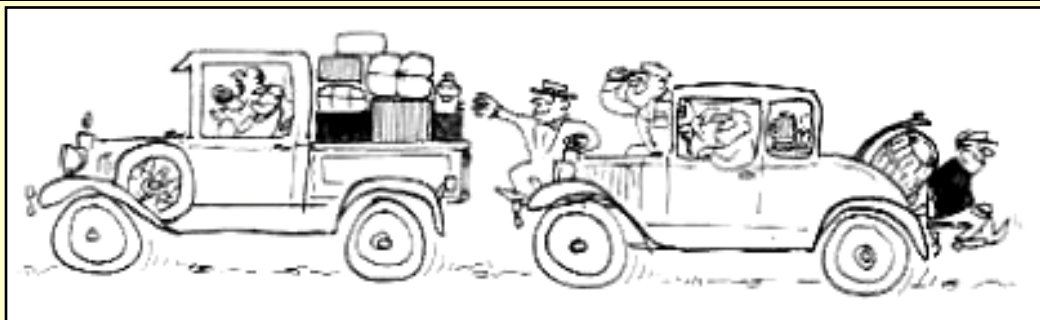

TORRANCE TRANSMISSION
 HONESTY EST. 1976 INTEGRITY
ERIC BAILEY
 310-378-9217
 TORRANCE TRANSMISSIONSERVICE.COM
 24009 HAWTHORNE BLVD.
 TORRANCE, CA. 90505
 torrancetrans@gmail.com

ARIZONA MODEL A, L.L.C.
 • NEW PARTS
 • USED PARTS
 • SERVICE
 • RESTORATION
 • HOURS: TUES-FRI 9-12, 1-5
 SAT & EVES BY APPOINTMENT

SAMUEL P. GUTHRIE
 15838 S. GILBERT RD., CHANDLER, AZ 85225
(480) 782-0266

Bringing midwest values and integrity to
 Southern California for over 30 years

BILL YOUNKIN
 1305 W. 132nd Street
 Gardena, CA 90247
 Cell (310) 766-6922

Our Advertising Friends
CW Moss Ford Parts
 420 W. Chapman Ave.
 Orange, CA 92866
 1-800-322-1932
Aquarium of the Pacific
 100 Aquarium Way
 Long Beach, CA 90802
 1-562-590-3100
Snyder's Antique Auto
 12925 Woodworth Rd.
 New Springfield, OH 44443
 1-888-262-5712





For MARC info and membership, see www.ModelARestorers.org



For MAFA info and membership, see www.MAFA.com

The Harbor Area A's meet monthly on the last Friday of every month at the Waleria Park Clubhouse, located at 3855 W. 1242nd St. in Torrance, California. Meetings begin at 7:30 PM (The park is located about 1-1/2 blocks west of Hawthorne Blvd. and one block south of Pacific Coast Hwy.) We'd like to invite all interested parties, even if they don't own a Model A Ford, to come and join us. Our goal is to educate the public about Model A Fords and have fun while doing it.

2025 Board of Directors:

President:

Dennis Simpson (310) 343-8227
Email: OldFordor@gmail.com

Vice-President:

Nathan Sherry (310) 626-7799

Treasurer:

Daffy Wagner (310) 374-6113

Secretary:

Gloria Younkin (310) 316-8722

Activities Committee:

Donnis Bates (310) 713-5830

Technical Director/Safety:

Cliff LeFall (323) 715-3153

Appointed Officers:

Membership:

Ursula Schmidt (310) 561-4895

Historian:

Janet Winter (310) 251-6673

Sunshine Secretary:

Theresa LeFall (323) 715-3153

Advertising:

Jim Huizdos (310) 529-7515

Refreshments Coordinator:

Weeg Thompson (310) 346-6409

Regional Correspondent:

Sue Hankins (310) 357-5233

Web: HarborAreaModelAClub.com

Appointed Officers:

Tool Custodian:

Bob De Crescenzo (310) 540-3690

Merchandise:

Jim Huizdos (310) 529-7515

M/Sergeant-at-Arms:

Jack Gordinier (424) 263-2397

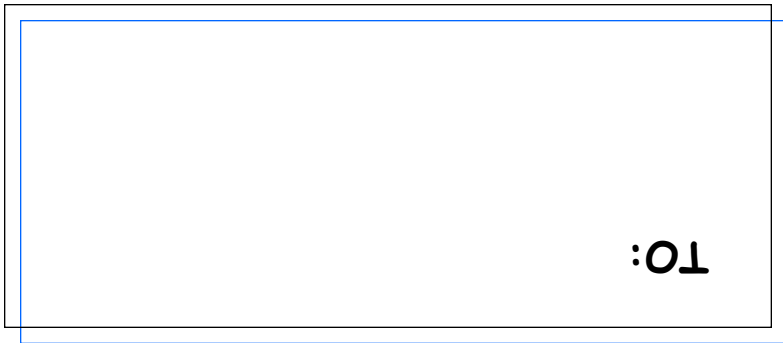
Webmaster:

Steve Thompson (310) 346-6143

Harbor Light editor:

Dick Wyckoff (310) 779-5772

E-mail: JannDick@earthlink.net



MARCH 2026

The Harbor Light

From:
Harbor Area Model A Club
Dick Wyckoff, Editor
337 Lomita St.
El Segundo CA 90245

