



HARBOR AREA MODEL 'A' CLUB

Dedicated to preserving and driving the 1928-1931 Model 'A' Ford since 1957
Torrance, California

MARCH 2025

2016-2022 MARC
Award of Continuing Excellence
for Harbor Light newsletter.
2020, 2023 MAFCA
Newsletter of Merit



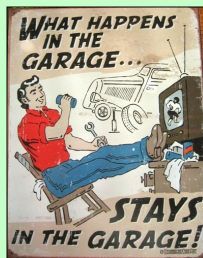
Super Bowl / birthday gathering at the Pisu's home

Technical Activities

Saturday mornings.
We meet from about
9:30AM to noon to work
on Model A projects.
Bring your Model A by and
we'll work on it.

Al's Garage,
907 Van Ness, Torrance
CA (in the alley)

Annual Safety check at the home of
Jack and Joan Gordinier 1 March 2025



Next Club Meetings:

The February meeting is at the
Walteria Clubhouse on
Friday, February 28th, 7:30PM.

The March meeting is
March 28th

Next Board Meeting

The next Board meeting
will be Saturday,
March 8th
Al's garage, 9:30AM



- 2 Dennis' Words — Looking ahead
- 2 Editor's corner — A little car history .
- 3 Super Bowl party— Gloria's B-day
- 4 Donniss learning about her Tudor
- 5 Era Model A Ad
- 6 MARC report - Items for sale
- 7 Some A history - Safety switch info

- 8 Clutch pedal adjustment
- 9 Birthday and anniversary dates
- 9 Women's fashions—1930's
- 9 Welcome our New member
- 10 A bit of Auto history
- 11 Our advertising friends
- 12 Officer List & Mailing Info

HARBOR LIGHT



inside



A Note from
Harbor President
Dennis Simpson



The Second Gear Grind

Pretty quiet in February following the Fantastic 2025 Banquet. But this is just the beginning of the year.

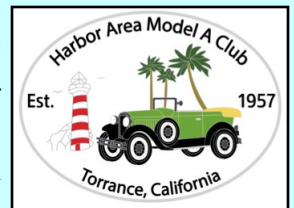
We did have a Blast (and ate way too much) at the Super Bowl Party hosted by Pisu, as we always do. Thank you once again Mirco and Elaine. I think Linda even broke even on the money we spent on the pools. I, as usual, won nothing.

Then later in the month 8 Model A's and a modern or two went on the "Just 'A' Mystery Tour" tour which took us for a little cruise thru North Redondo Beach, Manhattan Beach, El Segundo and Hermosa Beach, ending at the Hermosa Beach Historical Society Museum. Visiting the HB Museum brought back memories for me as I grew up in Hermosa Beach and my mother and I both attended Pier Avenue Junior High School (no. not at the same time!!) in the buildings where the museum is housed. The main part of the Museum is in the old wood shop just below the cafeteria/gymnasium.

Next up is our Annual **Safety Meeting** on March 1st at the home of Jack and Joan, 2017 W. 238th St. Torrance. It is a pot luck event. A-L Side dish/Salad, M-Z Main dish. I expect all of our members that have a Model A will be attending so Cliff and his "Safety Crew" can check your cars to ensure they are safe to drive on all the exciting tours and events the Activities Committee has planned for us in 2025. Bring your CASH. VP Tim is having a 50-50 drawing.

Soon after the Safety Check we will be trekking down to the City of Orange for the Annual OCMAFC Pancake Breakfast. This is one of my favorite events. It is ~70 miles round trip so make sure your car is safe and able.

Until next time, Remember, If you are only using your Model A to hold up a car cover, you are missing the best part of owning one. *Dennis*



*Editor's Corner
By Dick Wyckoff*

The weather here in So Cal has been a little wet so I haven't driven the Cabbie lately. This will change shortly! I guess we are a bunch of wimps compared to the rest of the country! (Hope everyone is safe and warm.)



Looking forward to some fun activities. Our Harbor Activity Committee is doing a fabulous job with current and future events. You are the BEST!

I got to thinking about how long I have owned a Model A. When I was a senior in High School in 1960, Model As were only 30 years old. A couple of my friends owned one. So my first car was a '29 Roadster Pick-up. Bought it off of a farm for \$150 and drove it home. It was a daily driver for me to both high school and junior college. I went in the Navy in 1963 and basically forgot the car in my parent's garage. When I bought my own house in 1976, I moved the A to that house and forgot it until 1998. I re-discovered interest in As from car shows and restored the pickup. I still have it! 65 years....

You see, Model As have been part of my life for a long time. Thank you, Henry!

Dick

Super Bowl Gathering at the Pisu's

On Super Bowl Sunday, Elaine and Mirco Pisu invited the Harbor Club to their home to watch the Super Bowl Football game. Three large screen TVs were on so everyone had a good seat. The rule for attending was to bring something to eat and to share with others. It didn't take long before we had 20+ people show up with enough food to feed a football team! It happened to also be Harbor Secretary Gloria Younkin's birthday.

A couple football pools were passed around to add to the fun. Well. . . The game turned out to be not that exciting. When the score was 20 to 0 early on, the focus was less football and more eating! We have some great cooks and there was a big variety of food. We did take time to take a few pictures.



Birthday girl Gloria and host Mirco



Prez Dennis relaxing



Happy Birthday Gloria



The ladies discussing the game. . . or something



Linda serving Gloria's birthday cake

[Saturday Morning Coffee Gathering is Alive and Well!](#)

If you are looking for a little tire-kicking adventure on **Saturday** mornings between 7 and 9AM, check out the Caffeine Cruisers at the corner of Artesia Blvd. and Hawthorne, in Torrance, CA. Several of the Harbor Model A club members and other car enthusiasts of all car types meet to talk cars. There are some very nice autos and some nice people there, too!

The address is 17400 Hawthorne Blvd., Torrance CA. (at Artesia Blvd.)

Come on by and get your weekend started in true So. California style.



[2025 Membership, Roster and Club Merchandise Items](#)

Jim Huizdos has a selection of new **Club merchandise**. We have hats, shirts, patches, t-shirts and we still have 60th anniversary items for sale at a discount. More to come. The updated **2025 Harbor phonebooks/rosters** are available from Ursi free of charge through e-mail. Club members that don't attend events can request a phonebook/roster by mail. Contact **Ursi Schmidt** at 310-561-4895. Make sure Ursi has your latest info. **Just a note:** We regularly update the roster. If you have any address changes, phone number changes or email changes, let Ursi know. Let Dick Wyckoff know, too. He'll put the info in the *Harbor Light*.

Donnis learning about her Model A Tudor



Donnis checking tire air pressure



Cliff and team checking brake adjustment

New to driving a Model A, Activities chair, Donnis Bates, carefully drove her Sedan to the Saturday morning 'Al's Garage' maintenance gathering led by Cliff LeFall. The team did a safety check and checked and adjusted the brakes, steering, ignition, and lights. After, it was taken for a drive with Donnis. All is well!

Model A Era Ad

YOU SAVE IN MANY WAYS WHEN YOU BUY A FORD

Low first cost is just one advantage of buying a Ford. Of even greater importance is the saving in the cost of operation and up-keep. As the months and years go by, this saving will total many dollars. The economy of the Ford is due to its simplicity of design, high quality of materials, and accuracy in manufacturing and assembly. Every part has been made to endure—to serve you faithfully and well for many thousands of miles. Ford owners everywhere will tell you of the economy and reliability of the new Ford. A salesman who travels long distances daily by automobile writes: "I purchased a Model A Ford Coupe on May 8, 1928, and at this writing have run it 75,888 miles. After I had driven 44,400 miles, I spent \$45 in repairs and at 61,000 miles had an additional amount of work done costing \$25. I have never had the brakes retined. My tire mileage has averaged better than 18,000 miles." Another Ford owner tells of traveling more than 24,000 miles in a year and says, "The only parts expense was 75c for a shock-absorber link and 50c for a new rubber for the windshield wiper." A total of 39,721 miles is reported by a Ford owner on 1585 gallons of gasoline. Large industrial companies which keep accurate cost records are buying more and more Ford cars every year because of their proved economy of operation and up-keep. Many of these have fleets of fifty, one hundred and two hundred Ford cars and trucks. One large corporation operates more than eight thousand. The experience of these careful buyers is a dependable guide for you to follow in the purchase of an automobile.



NEW FORD DELUXE ROADSTER

Fleet, ray lines and striking colors. Seat and back cushions of best composition upholstered in genuine leather. The streamlined sport top has base of natural wood. Flexible seat and steel lights are standard equipment.



Shatter-proof Glass Windshield

All of the new Ford cars have a Triplex shatter-proof glass windshield. This is an important safety factor because it reduces the danger of flying glass—the cause of most of the injuries in automobile accidents.

Fully Enclosed Four-Wheel Brakes

The four-wheel brakes on the new Ford are the mechanical internal expanding type. They are unusually effective and reliable with all working parts fully enclosed. This prevents water, dirt or grease from getting between bands and drums and interfering with performance.



Houdaille Double-Acting Hydraulic Shock Absorbers

Easy-riding comfort is another feature of the Ford car. This is due to the four Houdaille double-acting hydraulic shock absorbers, transverse springs, steel spoke wheels, low unsprung weight, and the torque tube drive.

More Than Twenty Ball and Roller Bearings

The new Ford is a smooth-running car because it has more than twenty ball and roller bearings—an unusually large number. In addition to smooth operation, they save gasoline, give more speed and power, decrease noise, and increase durability.



Rustless Steel

Bright, gleaming Rustless Steel is used for the headlamps, radiator shell and other exterior metal parts of the new Ford. It will not rust, corrode, tarnish or scale under any conditions. Its use is a further indication of the Ford policy of giving "Value Far Above the Price."

Craftsmanship in Manufacturing

The new Ford is made with unusual care. The aluminum pistons are held true to within one one-thousandth of an inch of the specified diameter of 3 1/2 inches. Wrist-pin holes are diamond bored within a variation of three ten-thousandths of an inch.



Other features of the new Ford are—

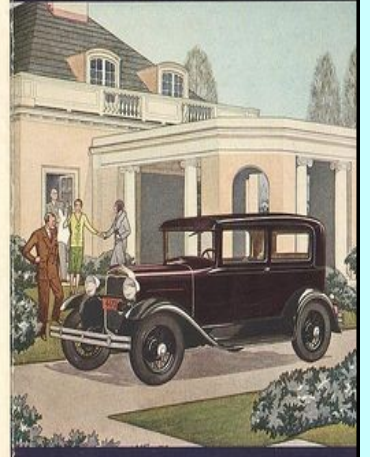
BEAUTIFUL LINES — CHOICE OF COLORS — EASE OF CONTROL
CHROME SILICON ALLOY VALVES — STURDY BODY CONSTRUCTION
ALUMINUM PISTONS — TORQUE TUBE DRIVE — RELIABILITY
LOW COST OF OPERATION AND UP-KEEP — LOW FIRST COST
55 TO 65 MILES AN HOUR — LONG LIFE — QUICK ACCELERATION

The source the right to make changes, improvements, or repairs, modifications, and equipment at any time without charging any obligation.



Ford
1928

THE NEW FORD



VALUE FAR ABOVE THE PRICE



MANY BEAUTIFUL FORD BODY TYPES IN A CHOICE OF COLORS FOR YOUR SELECTION



NEW FORD ROADSTER

A smart, alert, capable comes speedy as it looks. Triplex shatter-proof windshield and windshield wings fold flat. Remble seat may be lowered independently. Low cost operation and up-keep will save you many dollars.



NEW FORD SPORT COUPE

In rich, two-tone gray, the gray/linoleum is handsome, durable and water-tight. The sport treatment is carried into the interior. The deep seat cushions are luxuriously upholstered with a durable checked fabric.



NEW FORD PHAETON

Another example of Ford values—with low, fleet lines, beautiful color, and outstanding performance. The aluminum top is easy to set up or take down. Gleaming Rustless Steel is used for every exterior metal part.



NEW FORD DELUXE PHAETON

Sweeping lines and attractive sport treatment. Seat and back cushions upholstered in genuine leather. One wide door admits to front and rear seats. Adjustable driver's seat, fender well for spare wheel on left.



NEW FORD TUDOR SEDAN

A popular family car at low cost. Generous room for five people. Front seats fold. As in all new Ford, four Houdaille double-acting hydraulic shock absorbers and transverse springs give unusual riding comfort.



NEW FORD COUPE

A closed car with attractive body lines and beautiful colors. The seat's four inch adjustable range accommodates the driver with long or short reach. There is a large space in rear deck for luggage or packages.



NEW FORDOR SEDAN

A roomy, comfortably five-passenger car. The driver's seat is adjustable. There's a down light in rear compartment. You may drive and ride in this or any Ford car for hours and hours without fatigue.



NEW FORD DELUXE SEDAN

Truly Deluxe in line, color and appointments. Driver's seat is adjustable. Rear seat by folding center arm and side arm rests. Mohor or Bedford Ford upholstery of lovely, lasting texture is optional.



NEW FORD VICTORIA

The new Ford Victoria is a Deluxe car of unusual appeal. It is distinguished by its stunning windshield and ton top. Both front seats fold forward and are adjustable. Mohor or Bedford Ford upholstery is optional.



NEW FORD TOWN SEDAN

Luxurious transportation at low cost. Richly finished in every detail. The deep cushions are upholstered in Mohor or Bedford Ford according to choice. Folding arm rest in center of rear seat. Side arm rests.



NEW FORD CONVERTIBLE CARRIOLE

Combines the roadster's airy freedom and the snug comfort of a coupe. The convertible top may be easily raised or lowered. The adjustable seat is upholstered with rich ton Bedford cloth. Equipped with restful seat.



NEW FORD DELUXE COUPE

Another beautiful Ford Deluxe body. You may choose either luxurious Mohor upholstery or fashionable, deep ton Bedford Cloth. The spacious seat, with its custom-made steel back, can be adjusted.

The Model A Restorers Club, Inc.

THE ~~running~~ BOARD REPORT

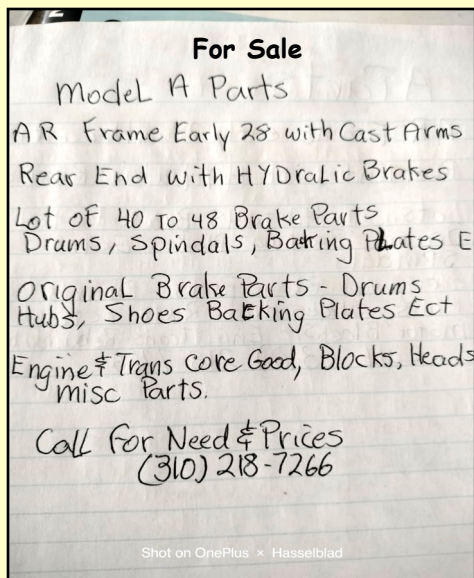
From Joe Valentine, President and Jim Zimmer, Director of Regions

Membership—We currently have about 5,500 active members (fewer than the 6,000 we projected for 2024), and we have about 1,100 members who have missed their renewal date. Regions, please encourage your members to check their renewal dates as we're finding many have just forgotten and do eventually renew—every member is important.

Another judged class—Driver Class has been added to our judged classes and standards are being written and will be published as soon as possible. Cars eligible for this class must have the external appearance of a stock Model A, but certain drive line, safety and performance modifications will be allowed. Driver Class judging is scheduled to be in place at the Gettysburg National Meet next year. Watch for the Gettysburg meet registration form in the *Model A News*.

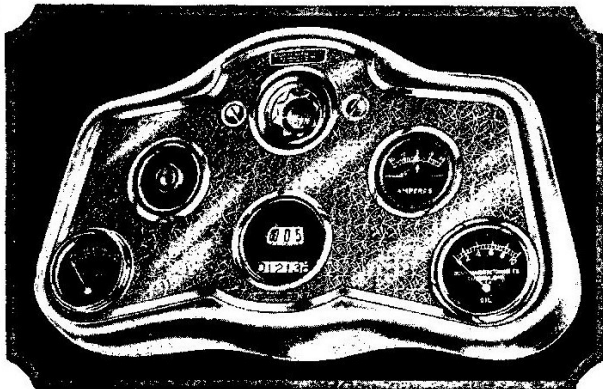
Regions—Please pay your 2025 Region renewal dues by December 31st. For your convenience, you may pay online by going to the MARC website: www.modelaford.org and selecting "Regions". Then click "register", fill out the required information and select payment type.

Coordination between the clubs—MARC and MAFCA are currently discussing hosting a joint meet in 2028 to celebrate the 100th anniversary of the Model A. This meet would not conflict with the MARC normal schedule of events, but would be an additional meet similar to a homecoming with no judging but lots of fun, food, and camaraderie. More details will be published as details become available.



For Sale
1933/1934
A pair of Quartz Halogen headlights.
Used, but like new!
\$300
Call: 310-529-8911
(Torrance, CA)

NEW—"Aristocrat"



December, 1930

INSTRUMENT BOARD for Model A FORDS

TRANSPORTATION by Land, Sea or Air demands this positive knowledge of cooling and oiling conditions. In addition the "ARISTOCRAT" adds beauty, lends charm and insures safety.

Every dealer who has examined the New "Aristocrat" with its etched metal panel is enthusiastic over its appearance and sales possibilities. Every Ford owner wants one.

It masks regular instrument board. Fits new models with dash light above panel. Installed by 4 screws now in Ford panel.

All these features — Extra beauty, extra quality, extra convenience — plus standard, dependable heat indicator, oil gauge, or auto clock of proven merit — are given at surprisingly low list prices that mean **FAST TURNOVER.**

Write for sample of etched panel metal sent **FREE** together with circular, prices and new dealer proposition on following models:

- | | |
|---------------------------------------------|----------------------------------------------|
| No. 5—Panel only without extra instruments. | No. 10—Panel, Heat Indicator and Oil Gauge. |
| No. 20—Panel, Auto Clock and Oil Gauge. | No. 30—Panel, Heat Indicator and Auto Clock. |

Each Instrument Board is packed in 3-color Display Box.

Dana Manufacturing Co.
Clarinda Iowa, U.S.A.

Sales are assured by our Special Dealer Proposition.

TINY TIPS

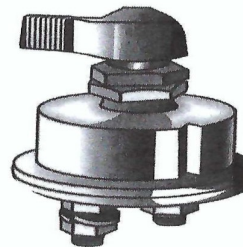
D

WARNING ABOUT USING DISCONNECT SWITCHES

A battery disconnect switch (as shown) will not allow the starter or other electrical components to operate when in the "off" position. Serious damage can occur to your generator or alternator, as well as the other electrical components if the switch is turned off with the engine running at a fast idle.

The battery acts as a kind of regulator for the output voltage of the generator. A generator's output can be as high as 38 volts without a battery in the circuit. The disconnect switch basically disconnects the battery from the electrical system. If the battery is disconnected while the engine is running and you turn on any lights, they will pop like flash bulbs and the coil, contact points and generator brushes are subjected to high voltage and will soon overheat and fail. In addition, if you are prematurely burning out bulbs, check electrical connection at the starter switch, terminal box, ammeter, cut-out, generator mounting bolt, battery cables and frame ground connection. A loose connection can, in effect, disconnect the battery from the circuit.

There are 12 to 15 of these "connection" areas!



Submitted by Dan Ritt, Mt Orab, Ohio
Illustrated by Dick Lewis, Lawrenceburg, Indiana

Jim's Tech Tip Clutch Pedal Free Play

It is easy to forget to check the Clutch Pedal Clearance (or Free Play) now and then, but you really do need to check it. I press down gently on the pedal with just a couple of fingers, to judge how far down the pedal goes before you are pressing the throwout bearing against the clutch "fingers". If you do not have an inch of movement, follow the instructions below. A little extra free play will not hurt anything.

Clutch Pedal Clearance

The correct clearance or play for the clutch pedal is approximately 1". That is when the clutch pedal is depressed there should be about 1" movement in the pedal before it starts to disengage the clutch.

As the clutch facings wear this clearance or movement gradually grows less. Consequently it should occasionally be checked. Under no circumstances should the car be driven without clearance or play in the clutch pedal.

Adjusting Clutch Pedal Clearance

The adjustment is easily made by removing the clevis pin (see Fig. 4) and turning the release arm rod. Screwing the rod in decreases the clutch pedal play. Screwing the rod out increases the play. After making adjustment, be sure to replace clevis pin and cotter key.

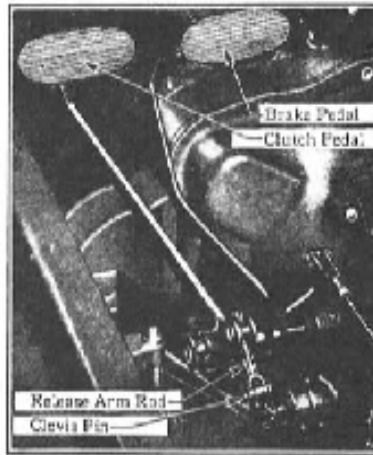


Figure 4
Clutch Pedal Adjustment

Forgetting to keep an inch or so of clutch pedal free play can lead to premature throwout bearing failure, because the bearing is spinning all the time where the pedal is pressing it into the clutch. We don't want that. So maybe check it every time you change the oil and adjust as required.

Have a Model A Day! Jim

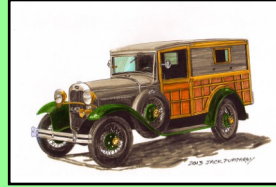


March Birthdays

8 Richard Parrish
9 Steve Adams
12 Margaret Gott
25 Jack Goldberg
28 Jim Perreten

March Anniversaries

7 Tim & Pat Harrison



1930 Era Fashions



Welcome our New Members

#1094 Eugene and Billie Gillingham

629 W. Oak Ave, El Segundo, Ca 90254

They drive a 1931 Tudor Sedan.

Welcome!

A little recent history

Price changes in just 24 years!

THE PRICE OF GAS

Thanks to Ursi for providing a cost comparison for different liquids in contrast to the cost of gasoline back in 2007! Here is an update for 2025

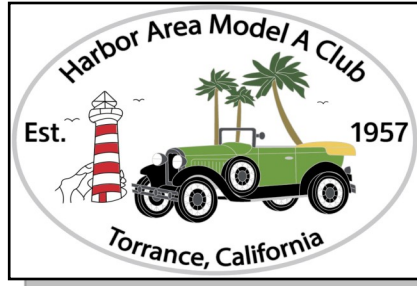
| Year | Gasoline- Cost per gallon (per Dept. of Energy) |
|------|----------------------------------------------------|
| 2001 | \$ 1.64 |
| 2005 | \$ 2.01 |
| 2010 | \$ 3.06 |
| 2015 | \$ 2.60 |
| 2020 | \$ 3.49 |
| 2024 | \$ 4.30 |

In comparison to other liquids, the price of gasoline doesn't seem so bad.

| | 2025 price | Price per gallon |
|------------------------|------------------------------|------------------|
| Gasoline | \$4.31 (per Dept. of Energy) | \$ 4.31* |
| Evian Water | \$ 3.29/liter | \$ 12.45 |
| Snapple | \$ 1.25/16 oz. | \$ 10.00 |
| Lipton Ice tea | \$ 1.12/16 oz. | \$ 8.96 |
| Gatorade | \$ 2.69/20 oz. | \$ 28.58 |
| Vicks Nyquil | \$ 14.49/12 oz. | \$ 154.56 |
| Pepto Bismol | \$ 7.49/8 oz. | \$ 119.84 |
| Scope Mouthwash | \$ 5.99/33.8 fl oz. | \$ 22.68 |
| STP Brake Fluid | \$ 12.00/12 oz. | \$ 128.00 |

So I suppose that the lesson here is to take good care of your brakes (\$128/gallon) and stay healthy (NyQuil \$154.56, Pepto Bismol \$119.84)!

The *Harbor Light* is a monthly publication for the Harbor Area MARC/MAFCA. All articles or want ads must be received by the 15th of each month in order to appear in the following month's publication. Neither the *Harbor Light* and its staff, nor the Harbor Region of the Model A Restorer's Club Inc. and Model A Ford Club of America, Inc. will assume any liability for errors or omissions, or for any liability or resultant damages for products, opinions or services listed herein. Some information contained in our newsletter has been reprinted from other newsletters; we thank and acknowledge them. Editor



Torrance, CA
JOEY'S SMOKIN' BBQ
 www.getmesomebbq.com

25308 Crenshaw Blvd.
 Torrance, CA 90505
 Email: joeyssmokinbbq@outlook.com
 1-310-257-1324

Proud printer of the 'Harbor Light'
STUDIO PRINTING


Edward Su
 ed@studioprinting.net
 www.studioprinting.net

1750 E. Holly Avenue
 El Segundo, CA 90245
 PHONE: 310-333-8989
 FAX: 310-333-8986
 CELL: 310-292-3219

EARLY FORD STORE
 of California
 www.earlyfordstore.com

Specializing in Rare Parts and Accessories for Early Fords 1928/1972 Passenger Car & Pick-Up

Bill McGrath
 San Dimas, CA 91773
 108 W. Bonita Ave.
 Tel: (909) 305-1955
 Fax: (909) 305-1953



Mike's "A" Ford-able Parts
Mike Butcher

124 Model A Drive, Maysville, GA 30558
 email: mike@mikes-afordable.com - www.mikes-afordable.com
 Fax: 706 652 2492 - Phone: 706 652 3866
 1 888 TRY MIKE (879 6453)



Specialising in 1928 - 1931 Model A Ford Parts

M B RENTALS
 Studio Equipment
 Lights and Fixtures



Drain Marshall
 Home: (310) 378-5061
 Cell: (310) 570-5938

BRATTONS ANTIQUE AUTO PARTS



1606 BACK ACRE CIRCLE
 MOUNT AIRY, MD 21771
 Order # **800 255-1929**
 Web: **brattons.com**

FREE 194 page illustrated MODEL A parts catalog
 Catalog contains 3,200 Model A parts with full descriptions and Picture of each part.
 Supplying Quality by using over 90% U.S. parts
 Serving the Model A restorer with parts since 1977



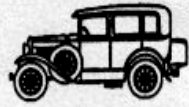
TORRANCE TRANSMISSION

HONESTY EST. 1976 INTEGRITY

ERIC BAILEY 24009 HAWTHORNE BLVD.
 310-378-9217 TORRANCE, CA. 90505
 TORRANCE TRANSMISSION SERVICE.COM torrancetrans@gmail.com

ARIZONA MODEL A, L.L.C.

- NEW PARTS
- USED PARTS
- SERVICE
- RESTORATION
- HOURS: TUES-FRI 9-12, 1-5
 SAT & EVES BY APPOINTMENT



SAMUEL P. GUTHRIE
 15838 S. GILBERT RD., CHANDLER, AZ 85225
 (480) 782-0266



Bringing midwest values and integrity to Southern California for over 30 years

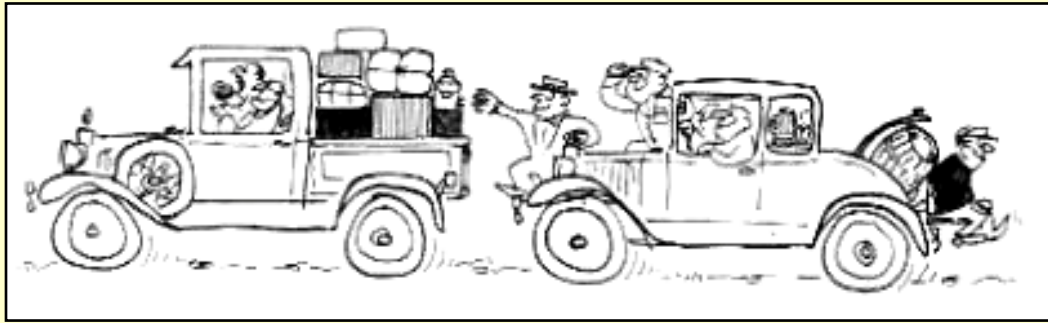
Midwest Roofing Co., Inc.

BILL YOUNKIN

1305 W. 132nd Street
 Gardena, CA 90247
 Cell (310) 766-6922

Our Advertising Friends

| | | |
|-----------------------------------------------------------------------------------------------------------------------------|-----------------------------------------------------------------------------------------------------------------------------------|-----------------------------------------------------------------------------------------------------------------------------------------|
| <p>CW Moss Ford Parts 420 W. Chapman Ave. Orange, CA 92866 1-800-322-1932</p> | <p>Aquarium of the Pacific 100 Aquarium Way Long Beach, CA 90802 1-562-590-3100</p> | <p>Snyder's Antique Auto 12925 Woodworth Rd. New Springfield, OH 44443 1-888-262-5712</p> |
|-----------------------------------------------------------------------------------------------------------------------------|-----------------------------------------------------------------------------------------------------------------------------------|-----------------------------------------------------------------------------------------------------------------------------------------|





For MARC info and membership, see www.ModelARestorers.org



For MAFA info and membership, see www.MAFCA.com

The Harbor Area A's meet monthly on the last Friday of every month at the Waleria Park Clubhouse, located at 3855 W. 1242nd St. in Torrance, California. Meetings begin at 7:30 PM (The park is located about 1-1/2 blocks west of Hawthorne Blvd. and one block south of Pacific Coast Hwy.) We'd like to invite all interested parties, even if they don't own a Model A Ford, to come and join us. Our goal is to educate the public about Model A Fords and have fun while doing it.

2025 Board of Directors:

President:

Dennis Simpson (310) 343-8227
Email: OldFordor@gmail.com

Vice-President:

Tim Harrison (310) 920-3319

Treasurer:

Daffy Wagner (310) 374-6113

Secretary:

Gloria Younkin (310) 316-8722

Activities Committee:

Donnis Bates (310) 713-5830

Technical Director/Safety:

Cliff LeFall (323) 715-3153

Appointed Officers:

Membership:

Ursula Schmidt (310) 561-4895

Historian:

Janet Winter (310) 251-6673

Sunshine Secretary:

Theresa LeFall (323) 715-3153

Advertising:

Jim Huizdos (310) 375-2737

Refreshments Coordinator:

Weeg Thompson (310) 346-6409

Regional Correspondent:

Sue Hankins (310) 357-5233

Web: HarborAreaModelAClub.com

Appointed Officers:

Tool Custodian:

Bob De Crescenzo (310) 540-3690

Merchandise:

Jim Huizdos (310) 375-2737

M/Sergeant-at-Arms:

Jack Gordinier (424) 263-2397

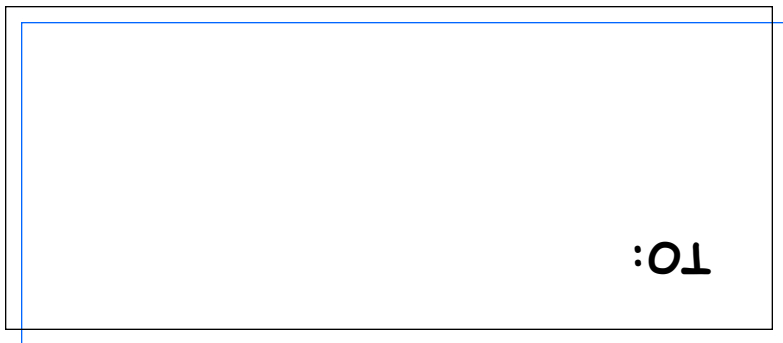
Webmaster:

Steve Thompson (310) 346-6143

Harbor Light editor:

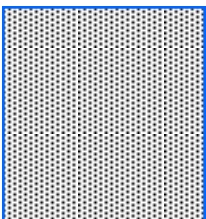
Dick Wyckoff (310) 779-5772

E-mail: JannDick@earthlink.net



MARCH 2025

From:
Harbor Area Model A Club
Dick Wyckoff, Editor
337 Lomita St.
El Segundo CA 90245



The Harbor Light

