

HARBOR AREA MODEL 'A' CLUB

Dedicated to preserving and driving the 1928-1931 Model 'A' Ford since 1957
Torrance, California

OCTOBER 2024

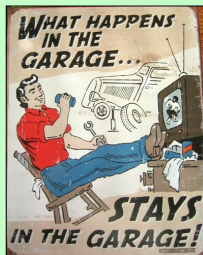
2016-2022 MARC
Award of Continuing Excellence
for Harbor Light newsletter.
2020, 2023 MAFCA
Newsletter of Merit



Harbor Club picnic celebrating National Model A Ford day in Palos Verdes, CA

Technical Activities

Saturday mornings.
We meet from about
9:30AM to noon to work
on Model A projects.
Bring your Model A by and
we'll work on it.
Al's Garage,
907 Van Ness, Torrance
CA



(in the alley)

Next Club Meetings:

The September meeting is at the
Walteria Clubhouse on
Friday, September 27th, 7:30PM
The October meeting will be on
Friday, October 18th
(a week early)

Next Board Meeting

The next Board meeting
will be Saturday,
October 11th at
Al's garage, 9:30AM



inside

- 2 Dennis' Words — Model A "Smileage"
- 2 Editor's Corner — Driving 'Tootsie'
- 3 Upcoming events calendar
- 4 Club merchandise - Items for sale
- 4 Welcome new member
- 5 Misc info
- 6 Model A wiring diagrams
- 7 Model A day pictures

- 8 MAFFI Monthly news & 10 "A" commandments
- 9 Birthday and anniversary dates
- 9 Men's era summer fashions—1930's
- 10 A bit of auto history
- 10 SCRG car show info
- 11 Our advertising friends
- 12 Officer List & Mailing Info



*A Note from
Harbor President
Dennis Simpson*



The Second Gear Grind

OMG!! By the time you read this it will be the end of September 2024 already. In the last two weeks we drove our Model As to visit two local lighthouses, one at Point Vicente and one at Point Fermin. One of the great things about driving our cars is the pleasures it gives others.

Driving our Model A requires the nerves of steel these days in modern traffic, but seeing strangers smile and wave as you drive by makes the nerves worth it.

There could be a few reasons why stranger might smile and wave as you pass by in your Model A:

They find you physically attractive and are expressing a positive reaction. (LOL)

They are naturally drawn to and interested in the appearance of a car they have never seen before.

You're bringing back memories of their bygone years.

They recognize you, it's someone you know.

Whatever the reason, it always makes my day knowing I put a little "Smileage" on the Ol' Girl all while making another person's day a little brighter.

Till next time, remember, Let us get our cars out and spread the Smileage.

Dennis



*Editor's Corner
By Dick Wyckoff*



Just driving "Tootsie" around the block. . . .

After reading Dennis' article, I got to thinking about the times I drive "Tootsie" to the store or for a quick look at a So Cal sunset at the local beach or just down the street to get a sandwich, people wave, honk their horns, drive along side and smile. The result is always the same. . . 'Love your car" or "What year is it?", or "How long have you had it" , or my favorite. . . "Did you buy it new?"

With all the stuff going on in the world, it is very rewarding to bring a positive event forward.

My church is having a 110 year anniversary party and people are asked to bring samples of their handiwork to show others. Most of this would be arts and crafts. I was asked to bring the Cabriolet! I guess it falls into the class of arts and crafts. . . .

I guess the message is "Keep driving those As"

Dick



October Events from the Activity Committee

<u>SUNDAY</u>	<u>MONDAY</u>	<u>TUESDAY</u>	<u>WEDNESDAY</u>	<u>THURSDAY</u>	<u>FRIDAY</u>	<u>SATURDAY</u>
OCTOBER 2024	HARBOR A HAPPENINGS	1	2	3	4	5 <u>MODEL A TECHNICAL SUPPORT</u> Al's Garage 9:30-12
6	7 <u>DINNER</u> 4:30 *Location TBD	8	9	10	11	12 <u>BOARD MEETING</u> 9:30 Al's Garage  <u>MODEL A TECHNICAL SUPPORT</u> Al's Garage 9:30-12
13	14 <u>DINNER</u> 4:30 *Location TBD	15	16	17  ACTIVITY MTG. 1:00	18 *MODEL A CLUB MEETING— Walteria Club House— Potluck 6:30 PM* ("Food for Kids" bags due) 	19 <u>MODEL A TECHNICAL SUPPORT</u> Al's Garage 9:30-12
20 <u>MODEL A'S VISIT TO</u>  LONG BEACH HEALTHCARE CENTER 10:00am (See additional Information below)	21 <u>DINNER</u> 4:30 *Location TBD	22	23	24	25	26 <u>MODEL A TECHNICAL SUPPORT</u> Al's Garage 9:30-12
27	28 <u>DINNER</u> 4:30 *Location TBD	29	<u>30</u>	31 HALLOWEEN 		*Contact Jim Huizdos or Gloria Younkin for dinner location.

OCTOBER EVENTS – ADDITIONAL INFORMATION

NOTE: NEW DATE FOR CLUB MEETING – EARLY VOTING AT WALTERIA ON 25TH

DATE: Friday, October 18th, **MODEL A CLUB MEETING & POTLUCK**

LOCATION: Walteria Club House, 3855 W. 242nd Street, Torrance, 90505

TIME: Since this is a potluck, we will be setting up at 6:00 and sitting down to eat around 6:30.

POTLUCK – Last Names

- A-L: Main Dish
- M-Z: Side Dish or Salad

If you have volunteered to fill a bag or two for "Food for Kids" please bring it to the meeting. We will be collecting them and delivering them to the Volunteer Center. If you would like to support them but would rather not fill a bag, they also accept cash/check donations.

DATE: Sunday, October 20th, **VISIT TO LONG BEACH HEALTHCARE CENTER**

LOCATION: 3401 Cedar Avenue, Long Beach 90807

TIME: 10:00am

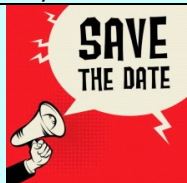
COST: None

LOCATION AND MEETING TIME: Harbor Freight, 4310 Artesia Blvd, Torrance, 90504

– Meet at 8:45 leave at 9:00

LUNCH: TBD depending on interest . . . as always 'you gotta eat'

Note: This is a nursing home in Long Beach. The residents are special need folks who have enjoyed our visit in the past. In fact, they asked if we could come again. It has been a couple of years since we have visited their home. We park our cars and they come out and visit and look at our cars. We do not take these residents for a ride; it is a car display for them to enjoy. If you would like to participate, please contact Weeg Thompson via text or call at (310) 346-6409 or Donnis Bates at (310) 713-5830.



Sunday, November 17th, San Antonio Winery

Sunday, November 24th, Old Town Music Hall, El Segundo

- Movie - Christmas in Connecticut (Tickets \$10.00 each)
- Lunch before (Richmond Grill)
- Pat Harrison is coordinating this event contact her to reserve your tickets by October 12th.

CHECK BACK HERE NEXT MONTH FOR GREAT EVENTS THAT ARE IN THE WORKS FOR DECEMBER.

Saturday Morning Coffee Gathering is Alive and Well!

If you are looking for a little tire-kicking adventure on **Saturday** mornings between 7 and 9 AM, check out the Caffeine Cruisers at the corner of Artesia Blvd. and Hawthorne, in Torrance, CA. Several of the Harbor Model A club members and other car enthusiasts of all car types meet to talk cars. There are some very nice autos and some nice people there, too!

The address is 17400 Hawthorne Blvd., Torrance CA. (at Artesia Blvd.)

Come on by and get your weekend started in true So. California style.



2024 Membership, Roster and Club Merchandise Items

Jim Huizdos has a selection of new **Club merchandise**. We have hats, shirts, patches, t-shirts and we still have 60th anniversary items for sale at a discount. More to come. The updated **2024 Harbor phonebooks/rosters** are available from Ursi free of charge through e-mail. Club members that don't attend events can request a phonebook/roster by mail. Contact **Ursi Schmidt** at 310-561-4895. Make sure Ursi has your latest info. **Just a note:** We regularly update the roster. If you have any address changes, phone number changes or email changes, let Ursi know. Let Dick Wyckoff know, too. He'll put the info in the *Harbor Light*.

Welcome our new member

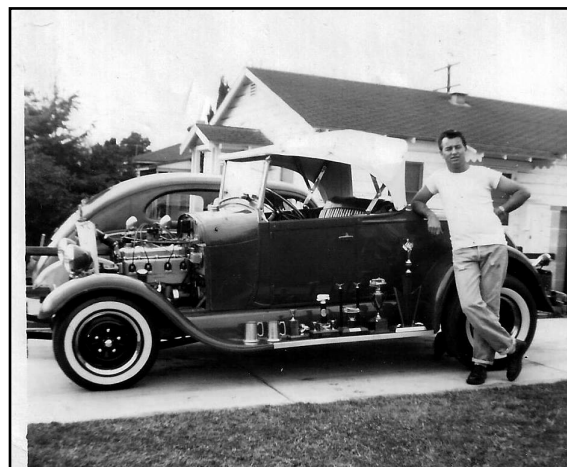
#1093 Rossana Enriques

26209 President Ave.

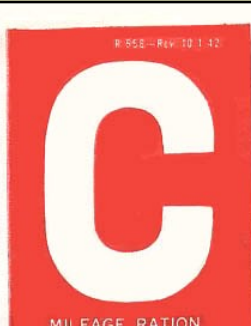
Harbor City, CA 90710

310-991-7687

Rosanna is the sister of Jeanette Sherry.



Art Wagner in 1957. Still has the car!



THIS DECISION SHALL BE DISPLAYED ON THE VEHICLE ONLY IN
YOUR LOCAL AREA WHICH CONFORMS WITH THE STATE LAW



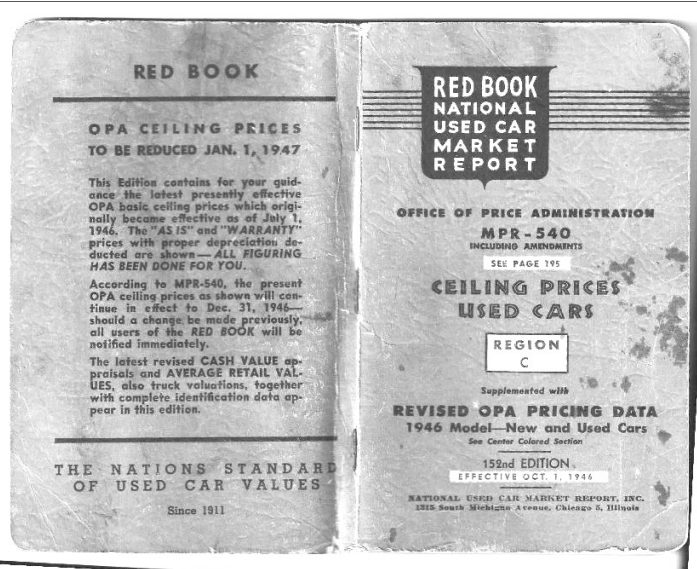
- Official Gov't or Red Cross business.
- School official traveling school to school.
- Transportation 4 or more to school.
- Transportation of United States mail.
- Wholesale newspaper delivery.
- Carrying newsreel photographic equipment.
- Physician, surgeon, veterinarian.
- Public Health nurse or interne.
- Embalmer.
- Minister, priest, or rabbi.
- Transportation of farm workers, marine workers, or farm materials.
- Essential hospital, utility, or war worker.
- Labor conciliation, recruiting, training workers.
- Construction, repair, maintenance services or production specialist.
- Members of Armed force to duty.
- Telegram delivery.
- Essential scrap agent.

A Look Back a Few Years.

At a garage sale a few weeks back, Dick Wyckoff was leafing through an unusual find. It was a 'Red Book National Used Car Market Report' dated October 3, 1946. It gave the going prices for used cars. It is like the 'Kelly Blue Book' used today. It included the usual cars seen today and several not in production any more, such as Hudson, Studebaker, Austin, Terraplane, Packard, LaSalle, and Graham. Further inspection found a section of the small book listing going prices for "old-obsolete-inactive models". In that section was the going price for a Model A Ford. Below is a copy of the page.

Remember, this was in 1946, only 15 years after the Model A was discontinued.

Note that the Model A cash value was \$70, and the retail price was \$105.



190 OLD—OBSOLETE—INACTIVE MODELS—Cont'd									
Year	Model	Motor Cyls. B. & S.	S.A.E.	Range of Serial Numbers	Wt. Factory Price	Av. 5-Pass. Sedan	Av. Cash Retail Value		
DE SOTO: Serial Nos.: On dash right below windshield. On right front door hinge pillar post.									
1931	CP	8	2 7/8x4 1/4	26.45 (1172PR to L1855PH) (6000213 to 6000800)	\$995	2965	\$50	\$75	
1931	CK	6	3 1/2x4 1/2	23.44 5096833 to 5011800	875	2705	60	90	
1932	SA	6	3 1/2x4 1/2	25.35 5038307 to 5040220	775	2695	75	115	
1932	CF	8	2 7/8x4 1/4	26.45 6001889 to 8004021	995	3025	75	115	
1933	SD	6	3 1/2x4 1/2	25.35 5056001 to 5068056	735	3060	100	150	
1934	SE	6	3 3/8x4 1/2	27.34 5068601 to 5082105	995	3378	125	180	
DODGE BROTHERS: Serial Nos.: Toeboard, right side, cross member under floor board, and toeboard left.									
1931	DC	8	2 7/8x4 1/4	26.45 (4501084 to 4504533) (E191HS to E192EL)	1045	3043	50	75	
1931	DD	6	3 3/8x4 1/2	23.44 (3504180 to 3516103) (D256CW to D257PH)	765	2668	50	75	
1932	DC	8	2 7/8x4 1/4	26.45 4504534 to 4505165	1045	3043	70	105	
1932	DD	6	3 3/8x4 1/2	23.44 3518100 to 3516115	765	2668	70	105	
1933	DP	6	3 3/8x4 1/2	23.44 3579001 to 3584421	670	2632	100	150	
1933	DC	8	3 1/2x4 1/2	33.8 4527001 to 4528601	1145	3580	100	150	
1934	DR	6	3 1/2x4 1/2	25.35 3680001 to 3755367	765	2940	125	180	
1934	DRXX	6	3 1/2x4 1/2	25.35 4000001 to 4015004	745	2940	125	180	
FORD: Serial Nos.: Left side of cylinder box.									
1931	A	4	3 7/8x4 1/2	24.03 3500000 to 5000000	590	2462	70	105	
1932		4	3 7/8x4 1/2	24.03 AB-5000001 to 5175514	540	2358	80	120	
1932		8	3 3/8x4 1/2	30.01 18-1 to 203128 1st mt.	590	2524	80	120	
1933	4-40	4	3 7/8x4 1/2	24.03 5188001 to 5185848	510	2465	100	150	
1933	8-40	8	3 3/8x4 1/2	30.01 18-203127 to 457447	560	2590	100	150	
1934	40	8	3 3/8x4 1/2	30.01 18-457478 to 1234566	575	2580	125	180	
1934	40	8	3 3/8x4 1/2	30.01 18-457478 to 1234566	615	2599	125	180	
FRANKLIN—Discontinued: Serial Nos.: Gas tank bracket, left. On dash under hood.									

Only in This Stupid World

.....do drugstores make the sick walk all the way to the back of the Store to get their prescriptions while healthy people can buy cigarettes at the front.

Only in This Stupid World

.....do people order double cheeseburgers, large fries, and a diet coke.

Only in This Stupid World

.....do banks leave vault doors open and then chain the pens to the counters..

Only in This Stupid World

.....do we leave cars worth thousands of dollars in the driveway and put
Our useless junk in the garage.

Only in This Stupid Worlddo we buy hot dogs in packages of ten and buns in Packages of eight.

Only in This Stupid Worlddo they have drive-up ATM machines with Braille lettering

Model A Wiring Diagrams

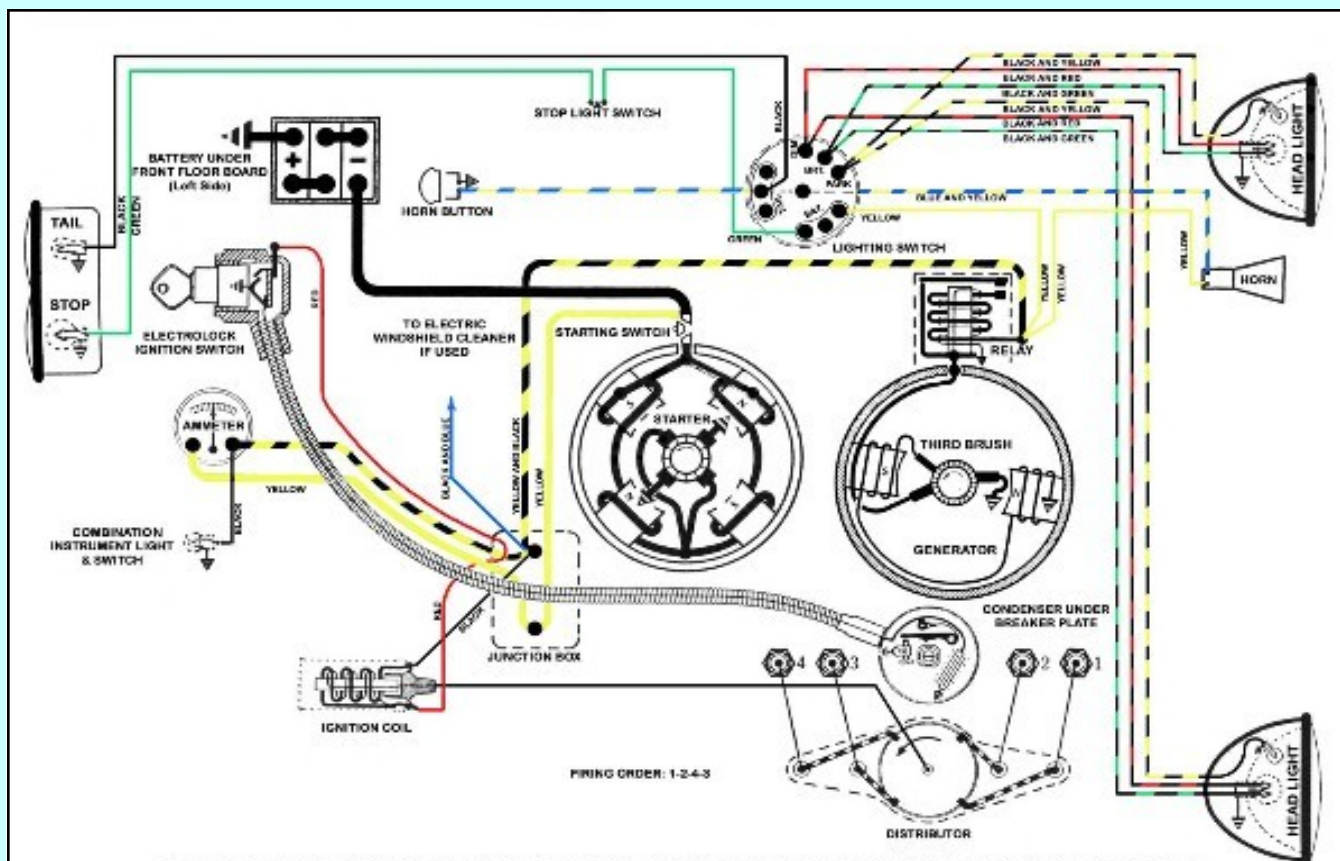
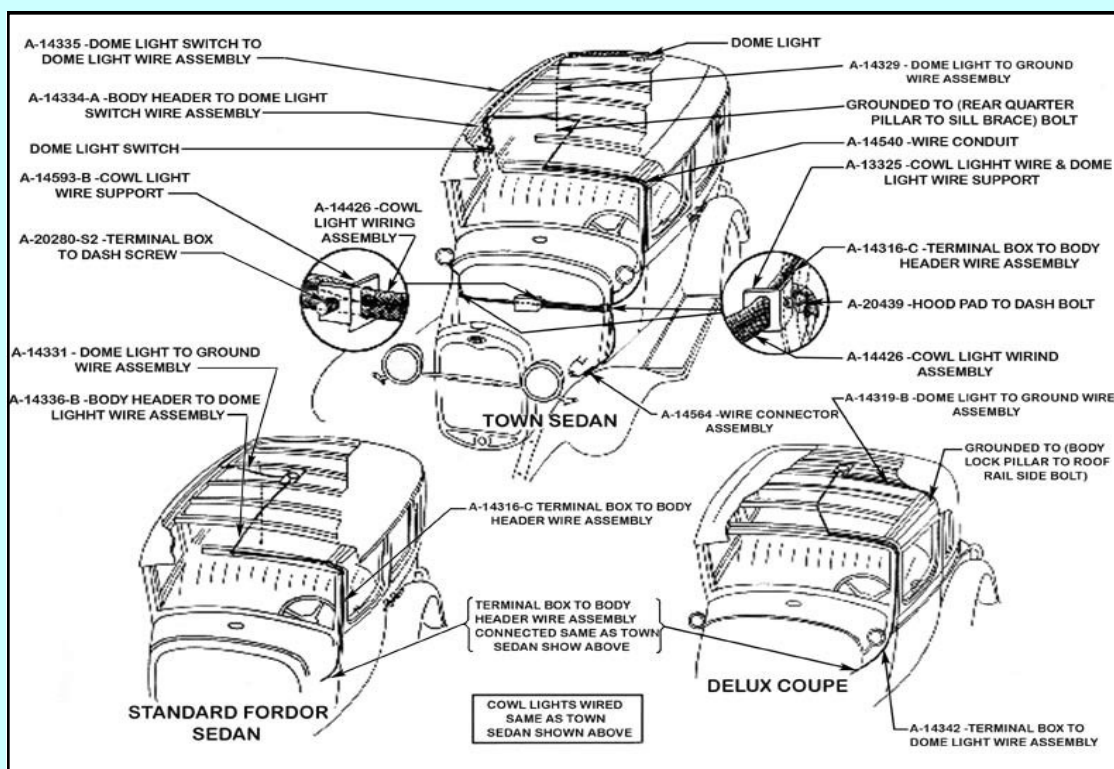


Fig. 18A. Wiring diagram showing the internal circuits of the model A Ford cars not equipped with cowl lamps, with two bulbs in each headlamp.

When starting to trace one of the several electrical circuits, begin with the positive (+) terminal of the battery or generator. The battery is the source of supply when the engine is not running, or generator is running very slowly. When the generator speed is increased to the point where its voltage becomes greater than the battery voltage, the relay points close and then the generator is the source of electrical current supply and also charges the battery. See *Dyke's Automobile Encyclopedia*, pages 332, 448 and 427 explaining the principle of operation of the current cut-out (relay), how to trace circuits, etc.



INTERNATIONAL FORD DAY CELEBRATION

On Saturday, September 14th, a baker's dozen of our Club members in five Model A's and one modern celebrated International Ford Model A Day with a lovely drive that started at the home of our President, Dennis Simpson, in Redondo Beach and ended at the Point Vicente Interpretive Center and Lighthouse in Rancho Palos Verdes.

We stopped along the way for a photo op of our cars with the Pacific in the background. Once at the Interpretive Center, we enjoyed a picnic lunch (everyone brought their own) out on the grounds as well as a visit to both the Interpretive Center and the Lighthouse Museum (which is only open on the second Saturday of each month). The Center features exhibits on the natural and cultural history of the Peninsula, including the Pacific gray whale. The Museum's exhibits include lighthouse lights, lighthouse information and aspects of the Coast Guard which manages the lighthouse.

It was a very pleasant day, well organized by our illustrious president, and a great way to celebrate International Model A Ford Day.



Model A Day lineup in Palos Verdes, CA



Front view of the Harbor Club tour in Palos Verdes CA

MAFFI Monthly News

Model A Friends,

I usually write this message from my kitchen table in Wisconsin, but this message is about as close to live as you can get: I'm at Hickory Corners at the Model A Museum on the eve of Model A Days 2024!

The Trustees, friends and family ---and the Grape A's Model A Club-- have been working out at the museum all day to get everything ready for tomorrow (setting up tables, tents, moving cars, cleaning and polishing). It's a bittersweet excitement because we usually work next to Trustee and Grape A member, Jerry Morrissey, who lost his battle with cancer a few short weeks ago and we miss him so much! He always headed up this day, so to not see his cheerful face is difficult.

But, on a brighter note, the attached photo is the expansion in progress. It's great to see what's happening after a year of fundraising! (Many thanks to all of you!) And, because it's the eve of Model A Days and the bus won't be unveiled for 24 hours, I'll have to wait with that picture until next month, but if you've been following the progress on Facebook, you know she's a beauty now.

Drive those A's and mark your calendar for next year's Model A Days (third weekend in September, the 19th and 20th of 2025), so you can see the museum expansion for yourself!

Cindy Ellenbecker, MAFFI Trustee, Secretary

Ten Commandments for the Car Collector

1. Thou shalt not store thy cars out-of-doors, except for the wife's modern iron.
2. Thou shalt not covet thy neighbor's car, nor his garage, nor battery charger.
3. Thou shalt not love thy cars more than thy wife and children; as much, but not more
4. Thou shalt not read thy "Restorer" on company time, lest thy employer make it impossible to continue thy car payments.
5. Thou shalt not despise thy neighbors Edsel, nor his DeSoto, nor even his Packard.
6. Thou shalt not allow thy daughters nor thy sons to get married during the holy days of the Old Car Swap Meets.
7. Thou shalt not deceive thy wife into thinking that thee is taking her for a romantic Sunday drive when, indeed, thou art going out to look at another Model A.
8. Thou shalt not tell thy spouse the entire cost of thy latest restoration,
At least not all at the same time.
9. Thou shalt not promise thy wife a new addition to the house and then use it to store cars;
Thou shalt not store Ford parts in the attic.
10. Thou shalt not buy thy wife a floor jack for her birthday.

October Birthdays

9 Julie Goldberg
25 Tim Harrison

October Anniversaries

1 Jim & Ruxella Speights
20 Jim & Elyse Beardsley
31 Gary & Emma Gaffney



1930 Era Fashions

SWEATERS



Warm "V" Neck Jacket
\$298
POSTPAID

8301507—Sail brown.
8301508—Black.
8301509—Navy blue.

Sizes, 34 to 46 inches chest measure. State size. Postpaid.

A general utility garment, heavy enough to provide plenty of extra warmth in tough weather, smart enough to be in any "style picture." Its high grade All Wool yarn is knitted in a popular narrow gauge shaker stitch. "V" Neck style with a situation front. Two sunny inverted pockets.

For Measuring Instructions Refer to Page 396. Write for Free Tape Measure.

saving much money. For comfort, class and savings. Try it.

We Pay the Postage



Long in Service
\$198
POSTPAID

8301610—Maroon.
8301612—Navy blue.
8301613—Brown.

Sizes, 34 to 46 inches chest measure. Be sure to state size.

The man who has rough, tough wear in store for his sweater will find a rugged model that can "take it" in this sturdy, **Mediumweight, Shawl Collar Cotton Sweater** with a small percentage of wool. He can save, too. Strongly knit in the wear resisting cardigan stitch. Has two large pockets and large, size double shawl collar.



Heavy All Wool
\$298
POSTPAID

8301596—Black with trim.
8301597—Navy blue with trim.
8301598—Maroon with trim.

Sizes, 34 to 46. State size.

Men's "V" Neck Pullover Sweater. Knit of all wool yarns in the sturdy **Shaker Stitch**. A neat trim of bright contrasting colors around the "V" neck. For sports or general outdoor wear. We pride ourselves on being able to get the high quality sweaters our customers prefer at prices they are glad to pay. This is an example of our ability to save you money on sweater purchases.

Sturdily Knit Shaker Stitch
\$389
POSTPAID

8301506—Navy blue.
8301507—Black.
8301508—Maroon.

Sizes, 34 to 46 inches chest measure. Be sure to state size. We Pay the Postage.

You'll begin to know real sweater comfort and style in this man's "V" Neck Pullover Sweater. Its price is well within the reach of the keenest buyers. Hard to beat in quality. Knit from All Wool yarns in a heavy shaker stitch. Well made and fashioned to insure a perfect fit. Neat fitting cuffs and bottom. The ideal garment for every man's wardrobe. Order one today on our usual guarantee of perfect fit and complete satisfaction or just money back.

Your Orders Shipped Within 24 Hours!

C129P-B
K-M-N **399**

A Little Bit of Automobile History

Mary Anderson: The Unsung Hero Who Invented Windshield Wipers

On a chilly New York day in 1902, Mary Anderson, a determined woman with a sharp eye for problem-solving, watched in frustration as drivers struggled to see through their snow-covered windshields. Inspired, she invented the world's first windshield wiper. Despite her groundbreaking design—operated from inside the car to easily clear away snow and rain—Anderson faced skepticism. Car manufacturers at the time failed to see its potential, but her invention would later become an essential safety feature for every vehicle. Though her name faded into obscurity, her impact lives on every time wipers clear a driver's view during a storm.



SOUTHERN CALIFORNIA REGIONAL GROUP (SCRG)

WE WILL LEND OUR SUPPORT TO RIVERSIDE'S
ORANGE BLOSSOM A'S MODEL A FORD CLUB
ON ITS FUNDRAISING, 3RD ANNUAL VINTAGE CAR SHOW

Saturday, Oct 26, 2024 at Elks Lodge, 6166 Brockton Ave. Riverside, CA.

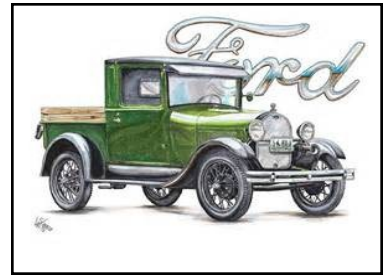
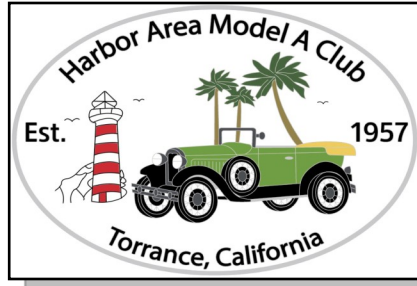
To encourage you to drive and enter your cars, the SCRG will hold an opportunity drawing for FIVE \$50 GAS CARDS. ONLY MODEL A'S THAT PARTICIPATE IN THE CAR SHOW WILL BE ELIGIBLE. The number of tickets you receive depends on how far you live from the Elks Lodge in Riverside.

- 1 ticket for 1 to 15 miles distance
- 2 tickets for 16 to 30 miles
- 3 tickets for 31 to 45 miles
- 4 tickets for 46 to 60 miles
- 5 tickets for 61 or more miles.

(You can only win once, and must be in attendance to win.)

SCRG 2558 Arroyo Canyon Rd. Escondido, CA 92025 secretary@scrgmafca.com

The *Harbor Light* is a monthly publication for the Harbor Area MARC/MAFCA. All articles or want ads must be received by the 15th of each month in order to appear in the following month's publication. Neither the *Harbor Light* and its staff, nor the Harbor Region of the Model A Restorer's Club Inc. and Model A Ford Club of America, Inc. will assume any liability for errors or omissions, or for any liability or resultant damages for products, opinions or services listed herein. Some information contained in our newsletter has been reprinted from other newsletters; we thank and acknowledge them. Editor



Torrance, CA
JOEY'S SMOKIN' BBQ
 www.getmesomebbq.com

25308 Crenshaw Blvd.
 Torrance, CA 90505
 Email: joeyssmokinbbq@outlook.com
 1-310-257-1324

Proud printer of the 'Harbor Light
STUDIO
 PRINTING

Edward Su
 ed@studioprinting.net
 www.studioprinting.net

1750 E. Holly Avenue
 El Segundo, CA 90245
 PHONE: 310-333-8989
 FAX: 310-333-8986
 CELL: 310-292-3219

EARLY FORD STORE
 of California
 www.earlyfordstore.com

Specializing in Rare Parts and Accessories for Early Fords 1928/1972 Passenger Car & Pick-Up

Bill McGrath
 San Dimas, CA 91773
 108 W. Bonita Ave.
 Tel: (909) 305-1955
 Fax: (909) 305-1953




Mike's "A" Ford-able Parts
Mike Butcher
 124 Model A Drive, Maysville, GA 30558
 email: mike@mikes-afordable.com - www.mikes-afordable.com
 Fax: 706 652 2492 - Phone: 706 652 3866
 1 888 TRY MIKE (879 6453)



Specialising in 1928 - 1931 Model A Ford Parts

M B RENTALS
 Studio Equipment
 Lights and Fixtures



Drain Marshall
 Home: (310)
 378-5061

BRATTONS ANTIQUE AUTO PARTS
 1606 BACK ACRE CIRCLE
 MOUNT AIRY, MD 21771
 Order # 800 255-1929
 Web: brattons.com



FREE 194 page illustrated MODEL A parts catalog
 Catalog contains 3,200 Model A parts with full descriptions and Picture of each part.
 Supplying Quality by using over 90% U.S. parts
 Serving the Model A restorer with parts since 1977

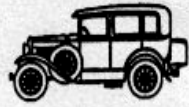
TORRANCE TRANSMISSION
 HONESTY EST. 1976 INTEGRITY



ERIC BAILEY 24009 HAWTHORNE BLVD.
 310-378-9217 TORRANCE, CA 90505
 TORRANCE TRANSMISSION SERVICE.COM torrancetrans@gmail.com

ARIZONA MODEL A, L.L.C.

- NEW PARTS
- USED PARTS
- SERVICE
- RESTORATION
- HOURS: TUES-FRI 9-12, 1-5
SAT & EVES BY APPOINTMENT



SAMUEL P. GUTHRIE
 15838 S. GILBERT RD., CHANDLER, AZ 85225
 (480) 782-0266

Bringing midwest values and integrity to Southern California for over 30 years

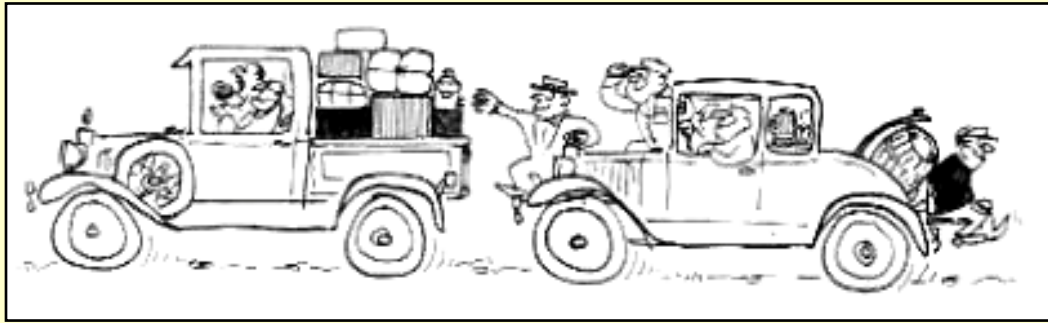


BILL YOUNKIN

1305 W. 132nd Street
 Gardena, CA 90247
 Cell (310) 766-6922

Our Advertising Friends

<p>CW Moss Ford Parts 420 W. Chapman Ave. Orange, CA 92866 1-800-322-1932</p>	<p>Aquarium of the Pacific 100 Aquarium Way Long Beach, CA 90802 1-562-590-3100</p>	<p>Snyder's Antique Auto 12925 Woodworth Rd. New Springfield, OH 44443 1-888-262-5712</p>
-----------------------------------------------------------------------------------------------------------------------------	-----------------------------------------------------------------------------------------------------------------------------------	-----------------------------------------------------------------------------------------------------------------------------------------





For MARC info and membership, see www.ModelARestorers.org



For MAFA info and membership, see www.MAFCA.com

The Harbor Area A's meet monthly on the last Friday of every month at the Waleria Park Clubhouse, located at 3855 W. 1242nd St. in Torrance, California. Meetings begin at 7:30 PM (The park is located about 1-1/2 blocks west of Hawthorne Blvd. and one block south of Pacific Coast Hwy.) We'd like to invite all interested parties, even if they don't own a Model A Ford, to come and join us. Our goal is to educate the public about Model A Fords and have fun while doing it.

2024 Board of Directors:

President:

Dennis Simpson (310) 343-8227
Email: OldFordor@gmail.com

Vice-President:

Tim Harrison (310) 920-3319

Treasurer:

Daffy Wagner (310) 374-6113

Secretary:

Gloria Younkin (310) 316-8722

Activities Committee:

OPEN

Technical Director/Safety:

Cliff LeFall (323) 715-3153

Appointed Officers:

Membership:

Ursula Schmidt (310) 561-4895

Historian:

Janet Winter (310) 251-6673

Sunshine Secretary:

Theresa LeFall (323) 715-3153

Advertising:

Jim Huizdos (310) 375-2737

Refreshments Coordinator:

Weeg Thompson (310) 346-6409

Regional Correspondent:

Sue Hankins (310) 357-5233

Web: HarborAreaModelAClub.com

Appointed Officers:

Tool Custodian:

Bob De Crescenzo (310) 540-3690

Merchandise:

Jim Huizdos (310) 375-2737

M/Sergeant-at-Arms:

Jack Gordinier (424) 263-2397

Webmaster:

Steve Thompson (310) 346-6143

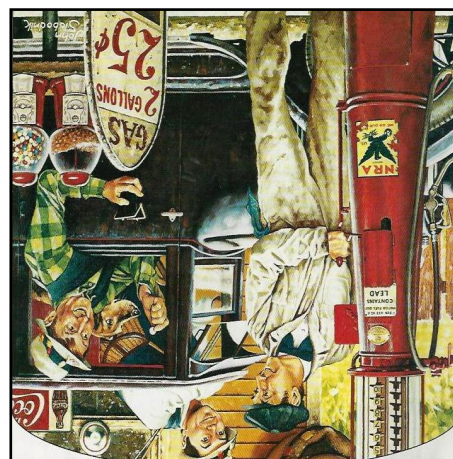
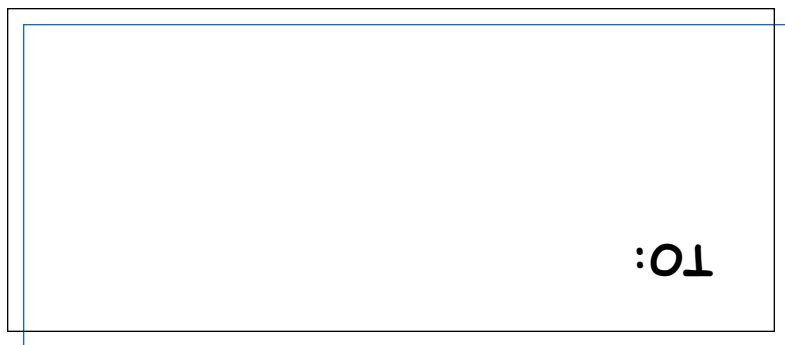
Harbor Light editor:

Dick Wyckoff

Phone: (310) 322-8863 (h)

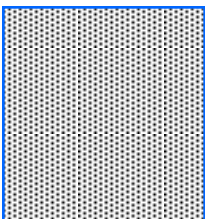
(310) 779-5772 (c)

E-mail: JannDick@earthlink.net



OCTOBER 2024

From:
Harbor Area Model A Club
Dick Wyckoff, Editor
337 Lomita St.
El Segundo CA 90245



The Harbor Light

